

The
Big
Reshape
towards equality

A collection of community artwork
imagining a fairer, kinder, safer world



2023 – 2024


Roots to Change cic

About The Big Reshape

Roots to Change facilitated a research study in 2023 that examined factors enabling violence against women and girls in Wandsworth and what could be done about it. The study pointed to a need for a reshape in how we tackle inequalities and other factors driving harmful behaviour and negatively impacting community cohesion.

In response, Roots to Change co-designed The Big Reshape, a community-led programme that aims to inspire hope and influence positive action towards building a kinder, cleaner and fairer world where everyone feels safe and equally valued. Roots to Change remains the lead partner.

As part of The Big Reshape, we have been inviting people to come together and paint their vision for a world where people feel safe and are kinder to each other to try to encourage optimism that we can help make our world a better place.

This project has helped bring into focus a bigger picture of safety, including but not limited to interpersonal safety; community support and connection; and living in harmony with the natural world.

About this book

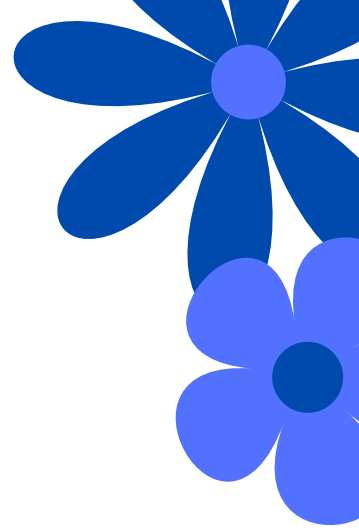
Between July 2023 and June 2024, Roots to Change succeeded in bringing together over 80 people from across Wandsworth and nearby boroughs to paint their vision for a world where people feel safe and are kinder to each other .

The artists represented a diverse range of ages, genders and backgrounds.

The artwork, together with highlights from the research and some suggestions on what we could all do individually and collectively to help address this issue were displayed in libraries and other public spaces across the borough during this time.

We also used these exhibition spaces as the backdrop to various events to engage people in the conversation in lots of different ways.

The artwork has gone back to the artists but we hope this book helps to keep it alive!



Alonzo



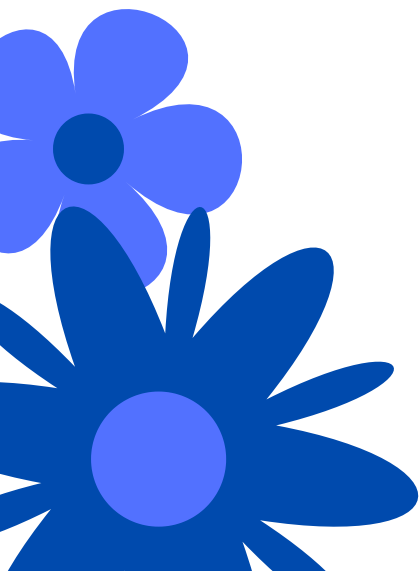
Jakeira



Kashifa

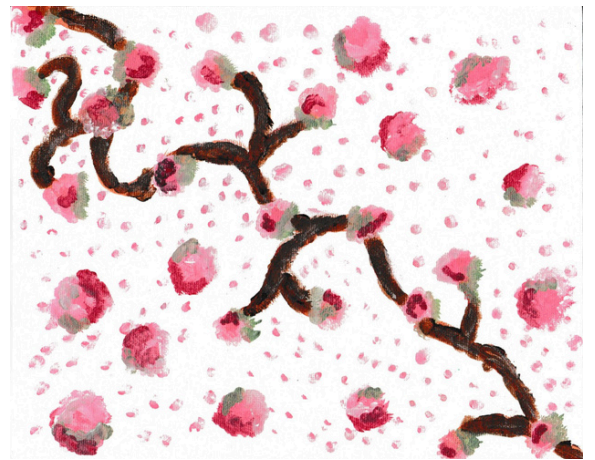


Ben





Naomi



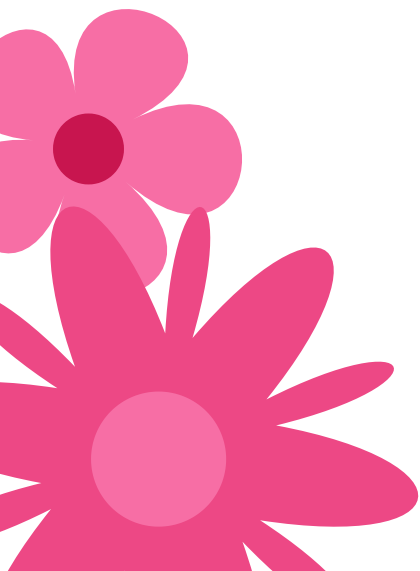
Shanaya

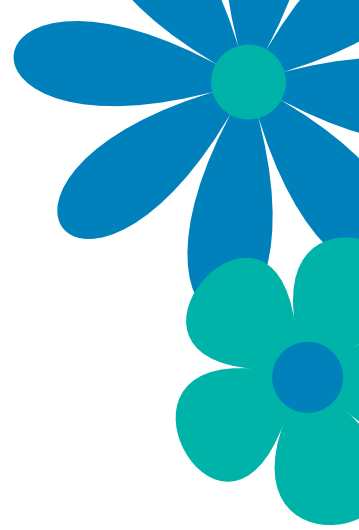


Anisha



Penda





Miranda



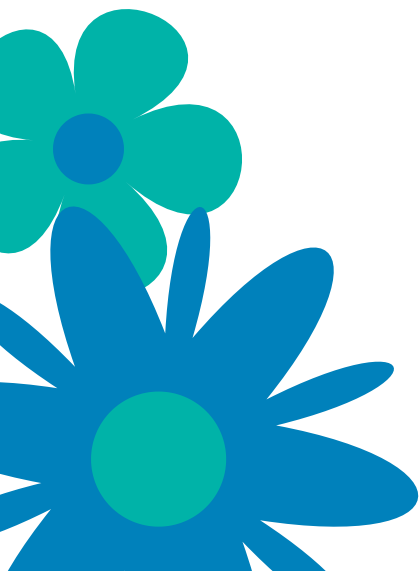
Jan



Shaline



Priya





Sal



Rachel

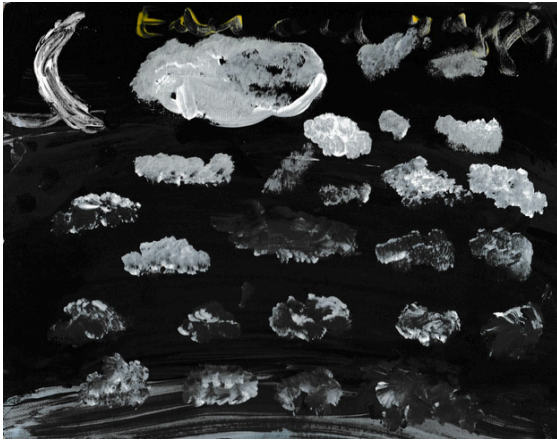


Shameenah



Vicky





Eden



Sahar

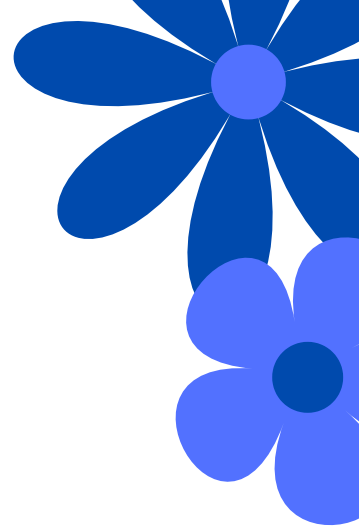


Naomi

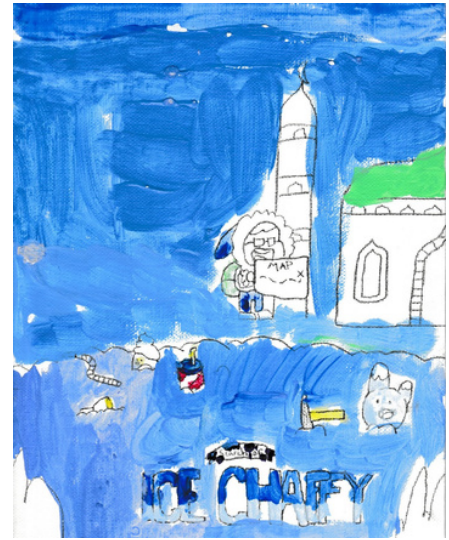


Neriah





Gemma



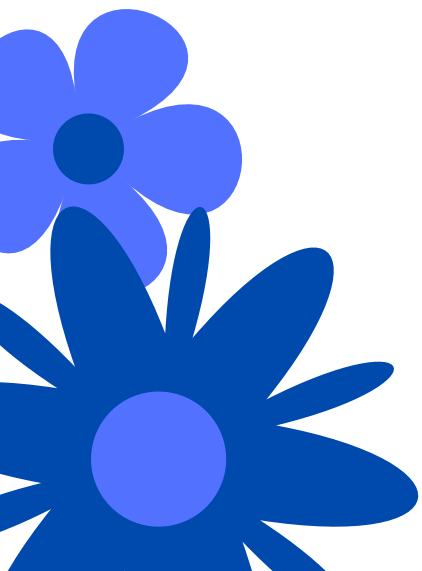
Aidan

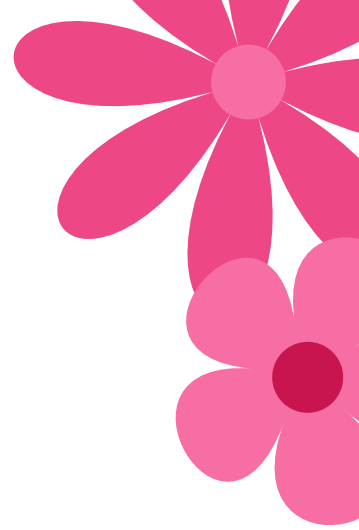


Jay



Rayyan





Maisha



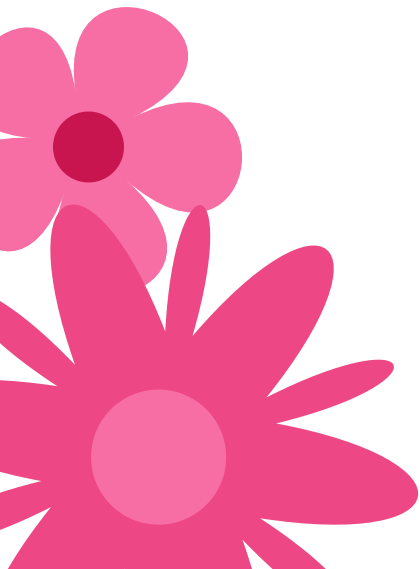
Rojan

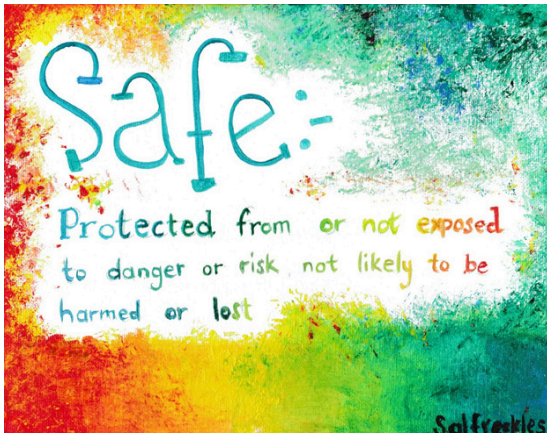
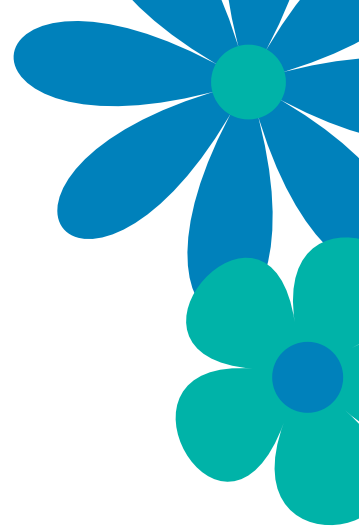


Amira



Janine





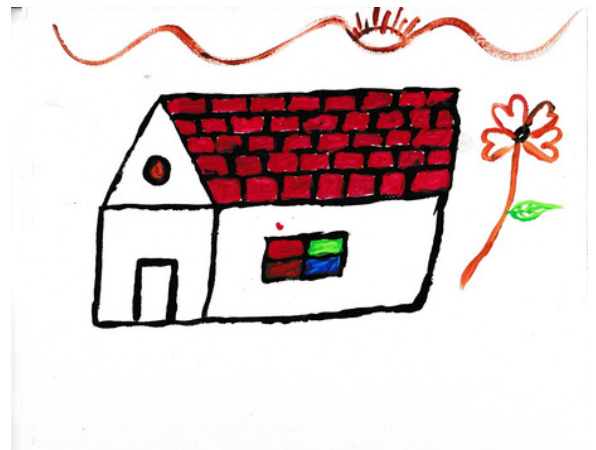
Sal



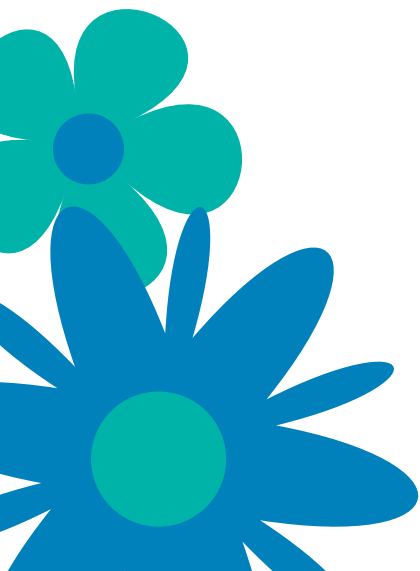
Mansor

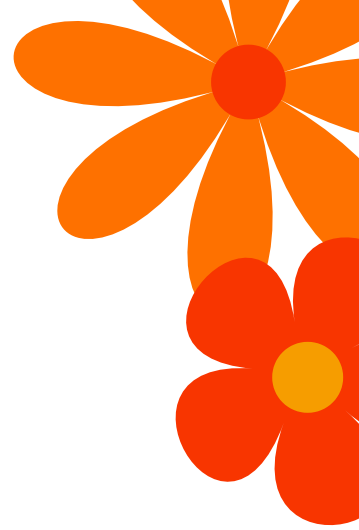


Eddie



Gyrinder





Nabgha



Sandra

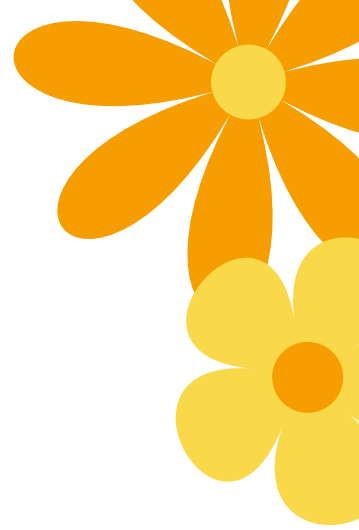


Shadiya



Emily

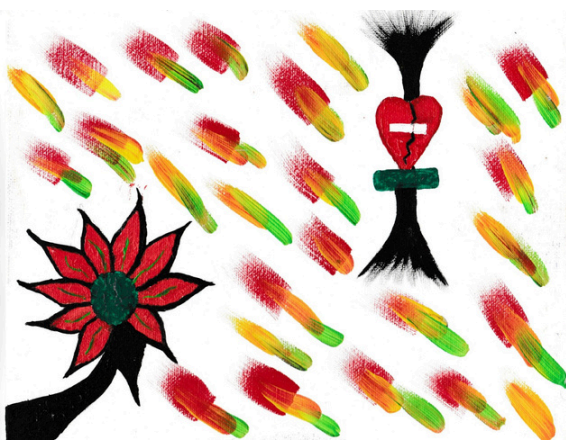




Emily



Naomi

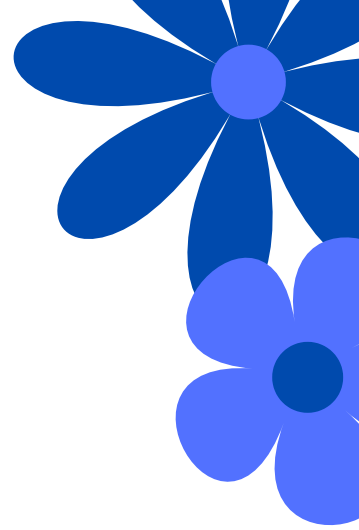


Sahar

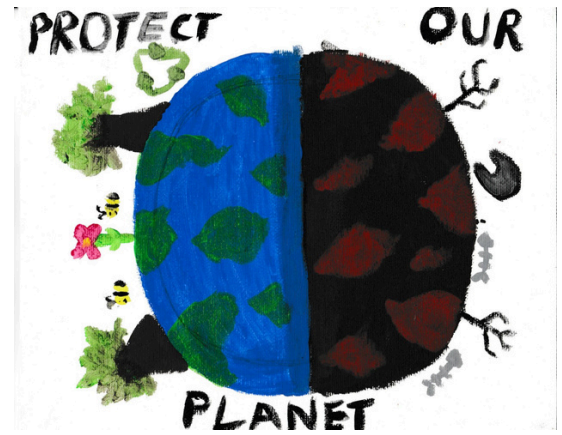


Harriet

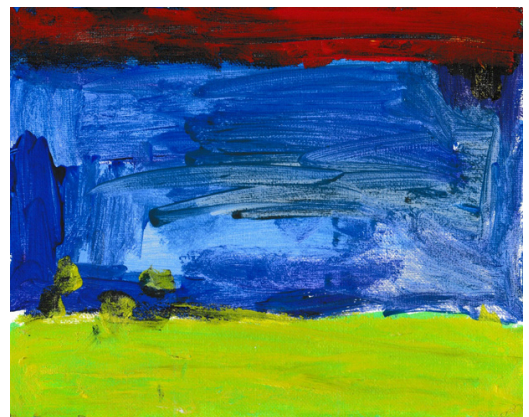




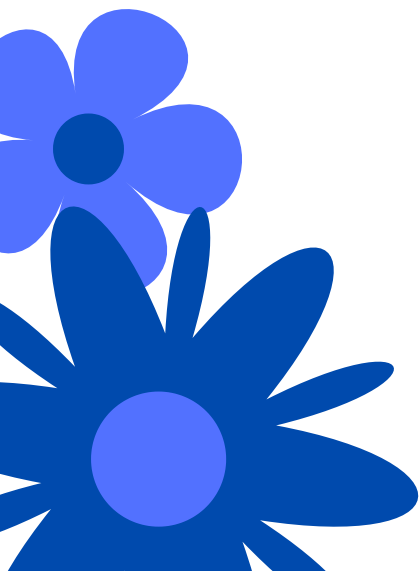
Robin

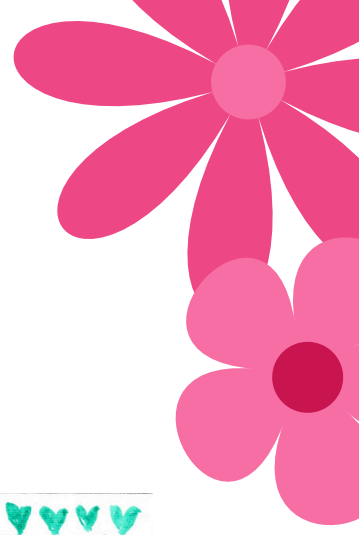


Shadiya



Aaliyah





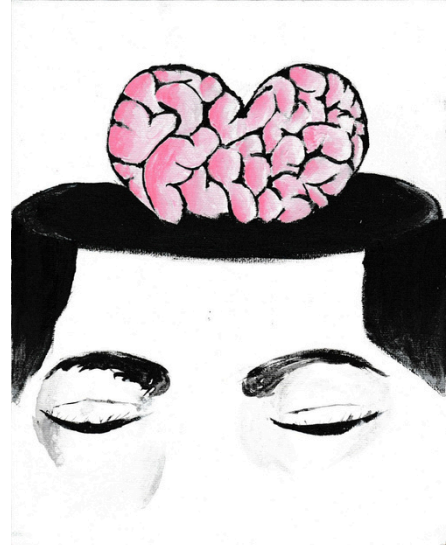
Nihat



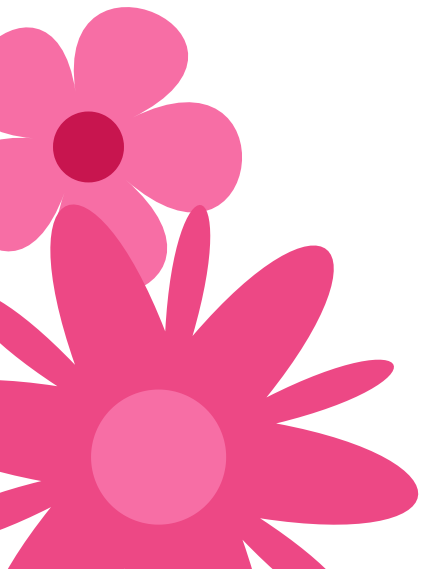
Çiğdem



Melis



Jay





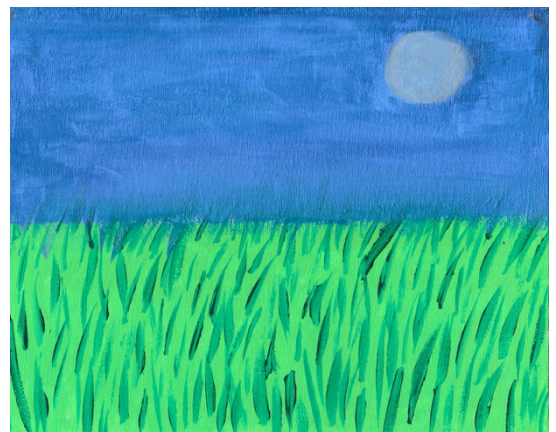
Lynne



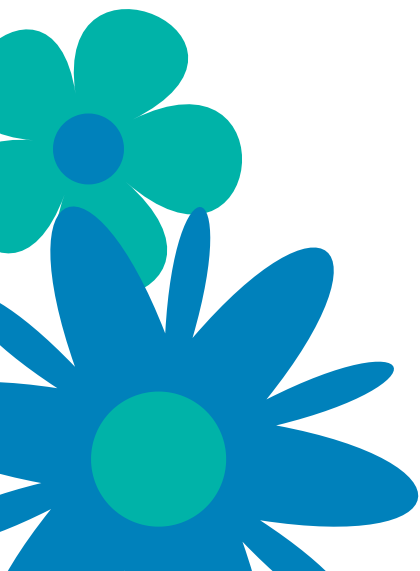
Lucy

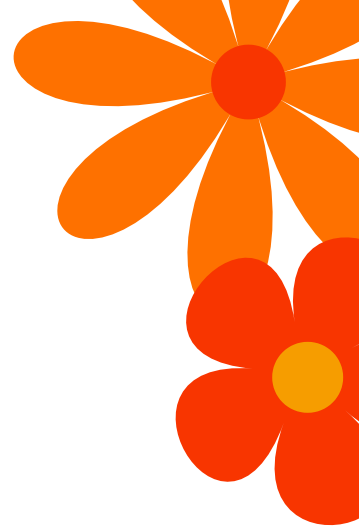


Aqsa



Jan





Rama



Sheliya

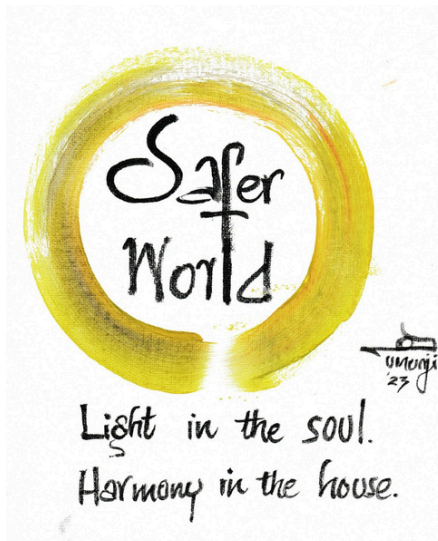
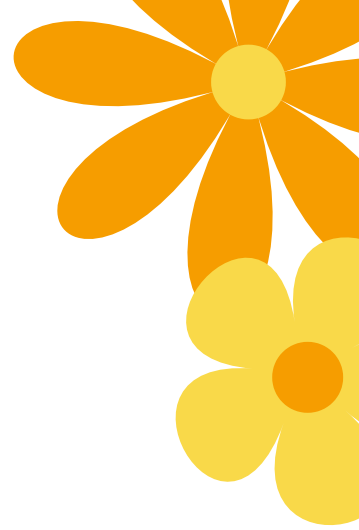


Alimanda



Pauline





Umunji



Sarah

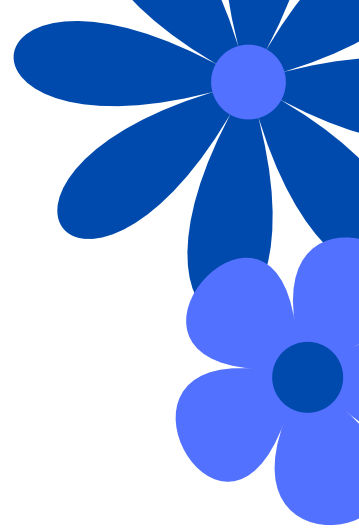


Ben



Jay





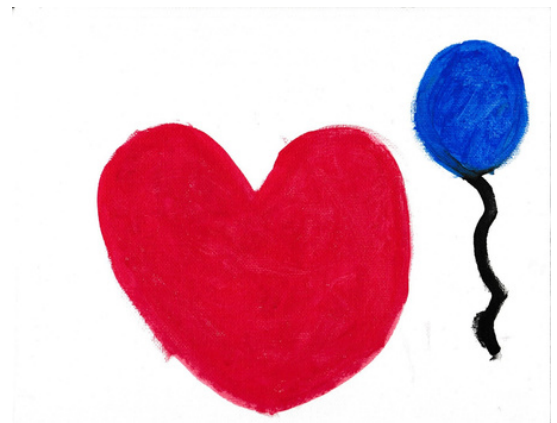
Ouna



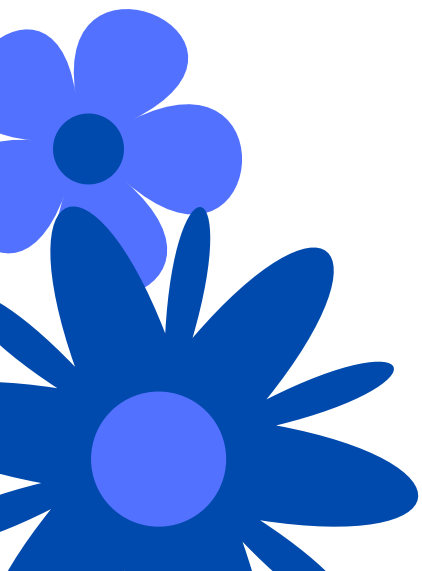
Sheliya

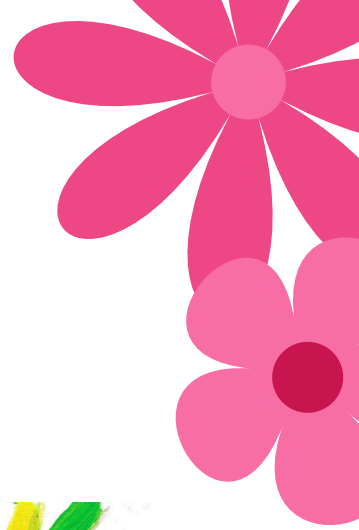


Jakeira



Hestiar





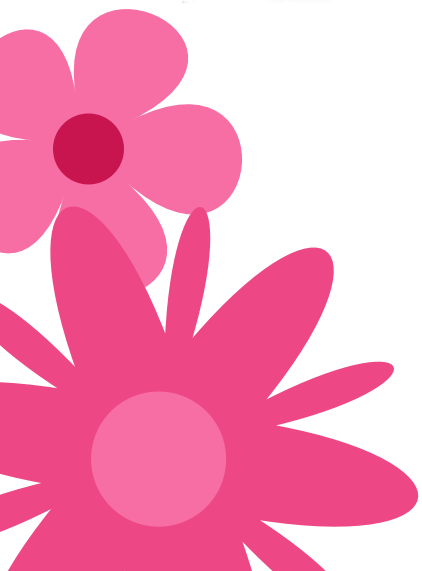
Esna

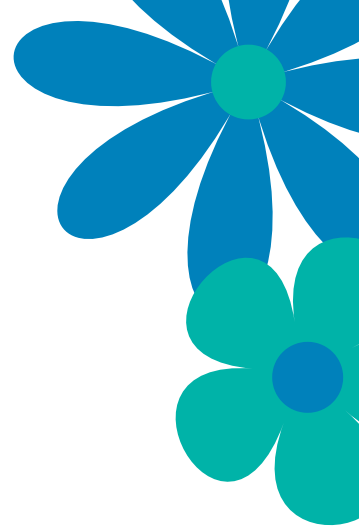


Jay



Alina





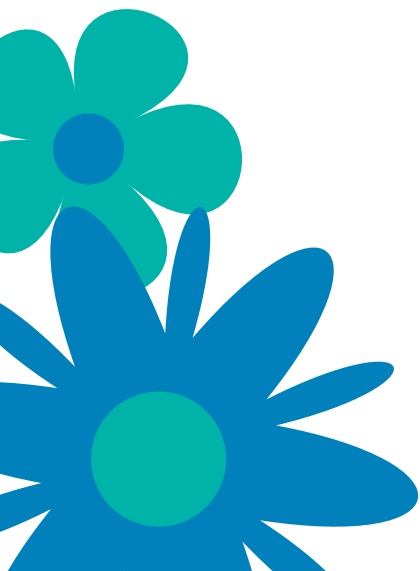
Maguette

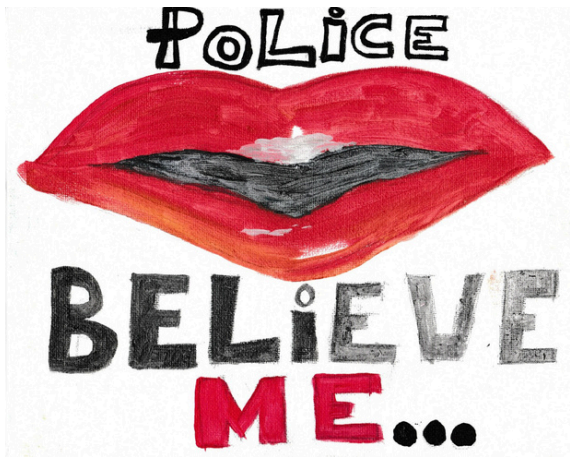
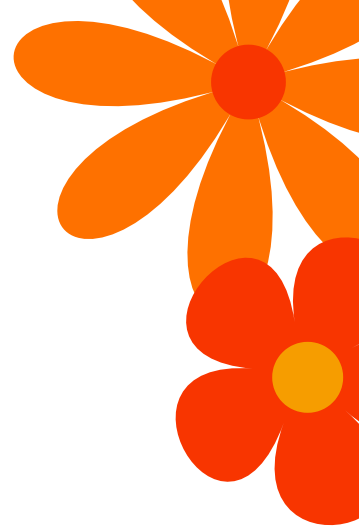


Lacie



Yusu





Donna

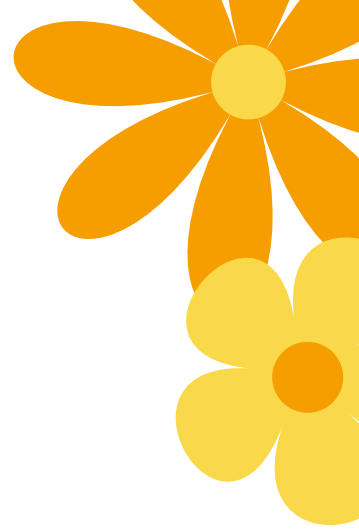


Jumoke



Sal





Lamia

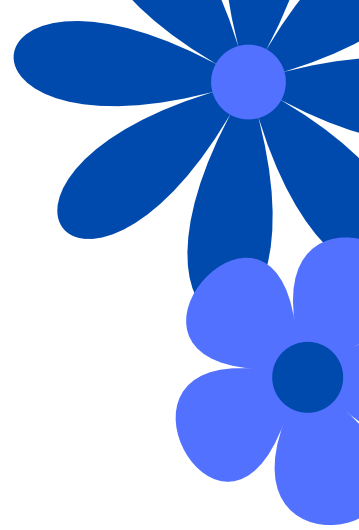


Anolin



Lubna





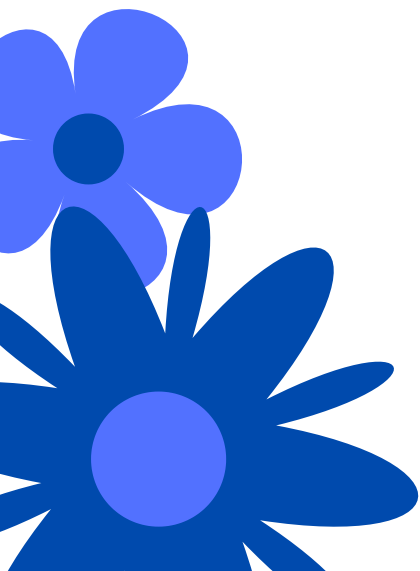
Narges

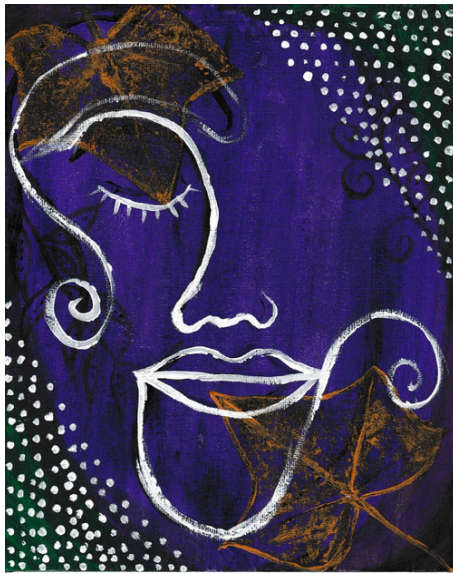
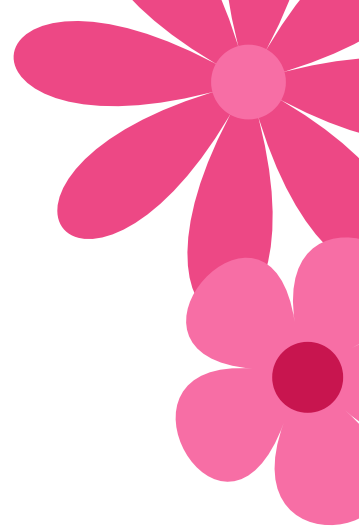


Claire



Polly





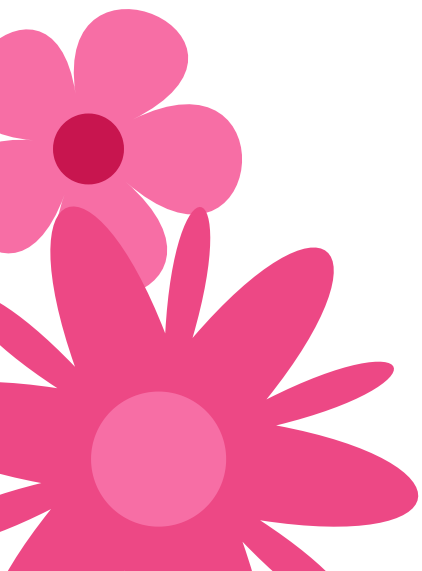
Jumoke



Janina



Tasnim

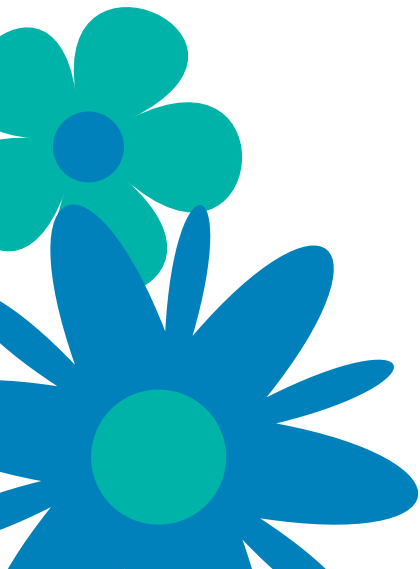




Diya



Sal





Joshua



Ayesha



Jaya



Marika





Ayesha



Maisha



Cristina



Polly



About Roots to Change CIC

Roots to Change is a community interest company based in Battersea that draws on over 20 years of experience in the private and social sectors.

Working in partnership with a range of organisations, our key areas of expertise include:

- Managing a range of projects and programmes
- Conducting participatory research on a range of issues
- Facilitating consultations and other community engagement processes
- Providing children and young people with social, emotional and academic support in various settings
- Providing bespoke strategy and project support
 - Leading evaluations and reviews

A portion of income generated from our core business is used to fund various activities of our community programmes

Get in touch to discuss how we might collaborate and/or how you may support our work at
polly@rootstochange CIC.com



Roots to Change cic