



# The Big Reshape

towards equality



## The Big Reshape Art Project Westminster 2025

A collection of children's artwork that imagines a world where everyone feels safe and is equally valued, and where diversity in all its forms is celebrated

## About The Big Reshape Art Project

In 2022/23, Roots to Change facilitated a research study that examined factors enabling violence against women and girls in which over 150 people participated.

The study highlighted the need for a reshape in how we tackle factors driving harmful behaviour and impacting community cohesion. It called on communities and organisations to create more opportunities for people to come together on shared goals and to strengthen relationships. It also emphasised the need to prioritise the mental health of children and to support them in reaching their full potential, not limited by harmful stereotypes.

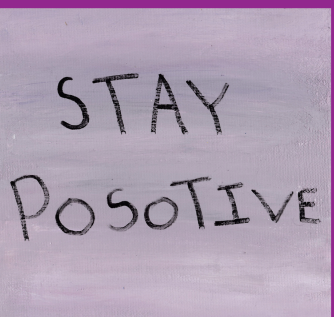
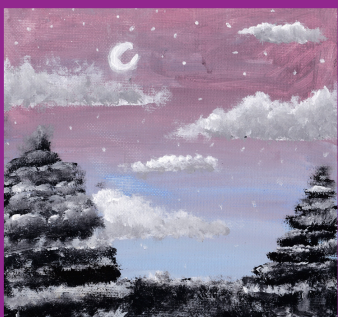
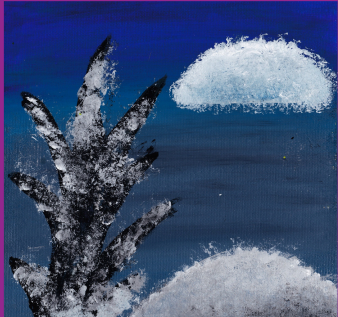
In response, Roots to Change co-designed The Big Reshape, a community-led programme that aims to influence positive action towards building a fairer world. As part of this, we have been inviting people to imagine a world where everyone feels safe and equally valued and where diversity in all its forms is celebrated.

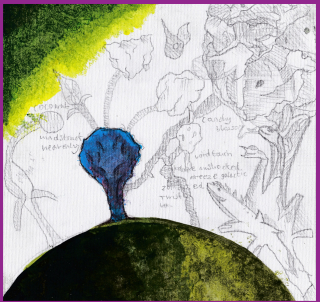
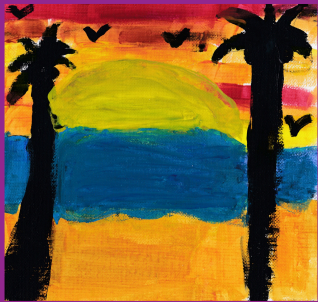
So far, we have engaged over 400 children and adults to paint what this looks like to them. Over the past two years, we have been showcasing this artwork in libraries and other public spaces across London.

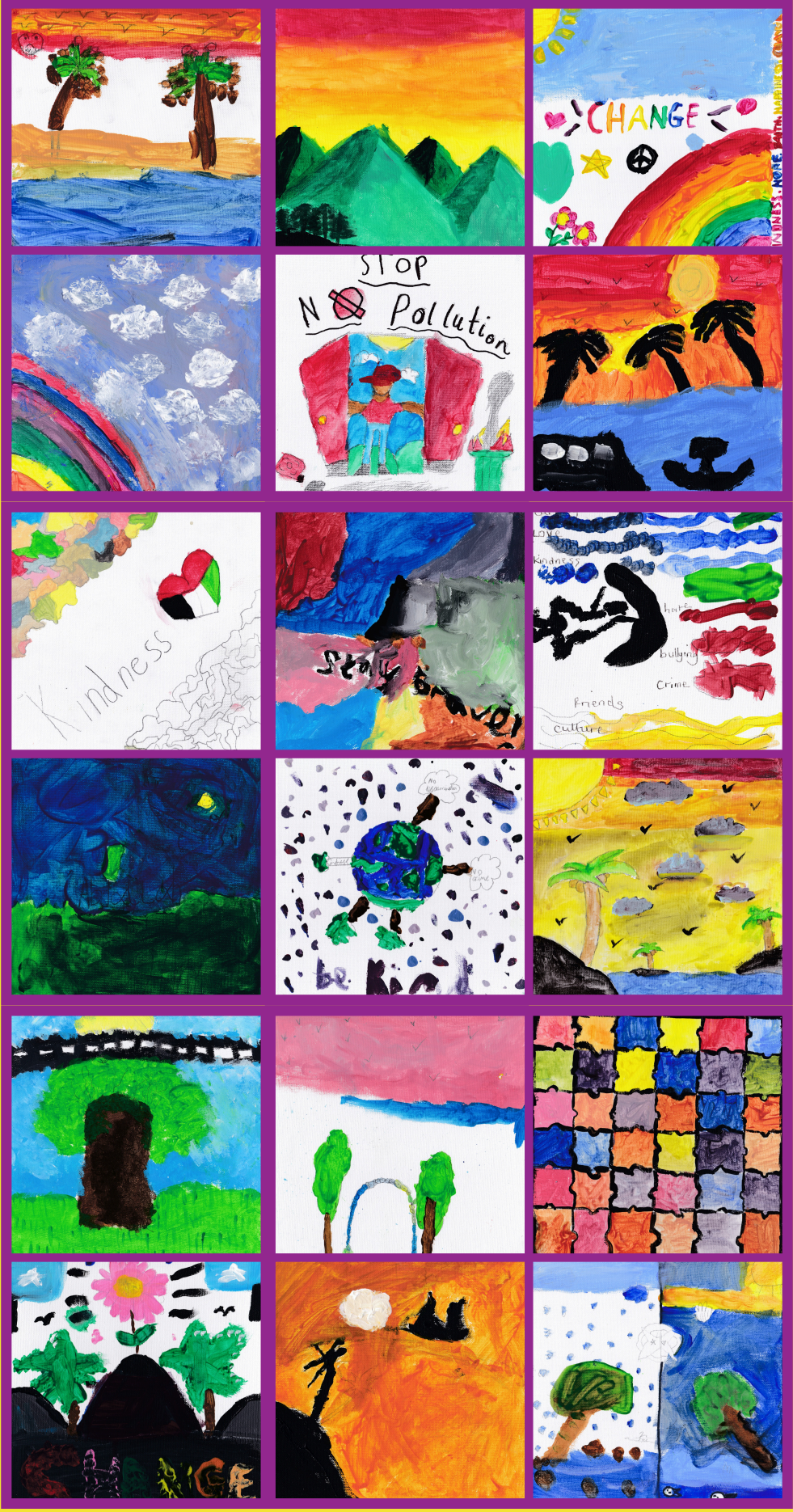
During June and July 2025, and in partnership with Westminster Children's University, we ran a series of art workshops in five participating primary schools in the borough. We exhibited their artwork during July and August in Paddington Library.

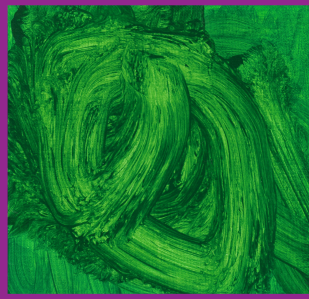
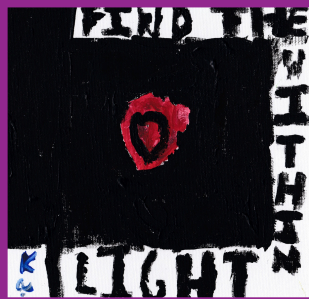
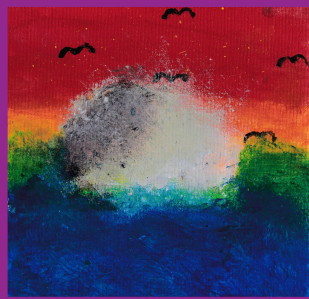
The 185 pieces of original artwork has been returned to the artists but we hope their beautiful work will live on in this book.

We hope you enjoy it!

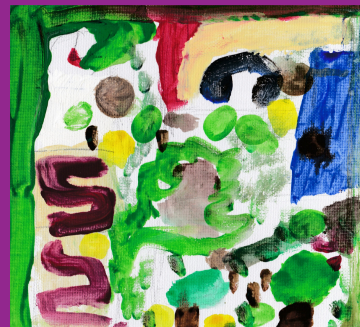
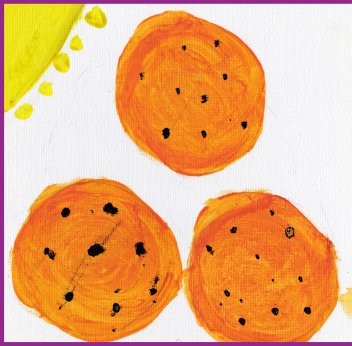




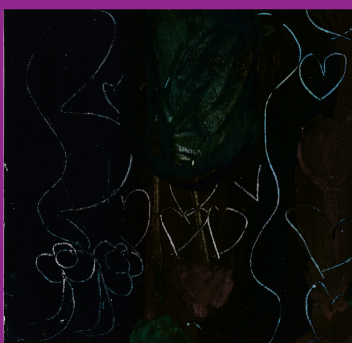
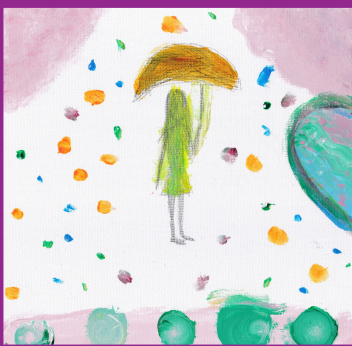


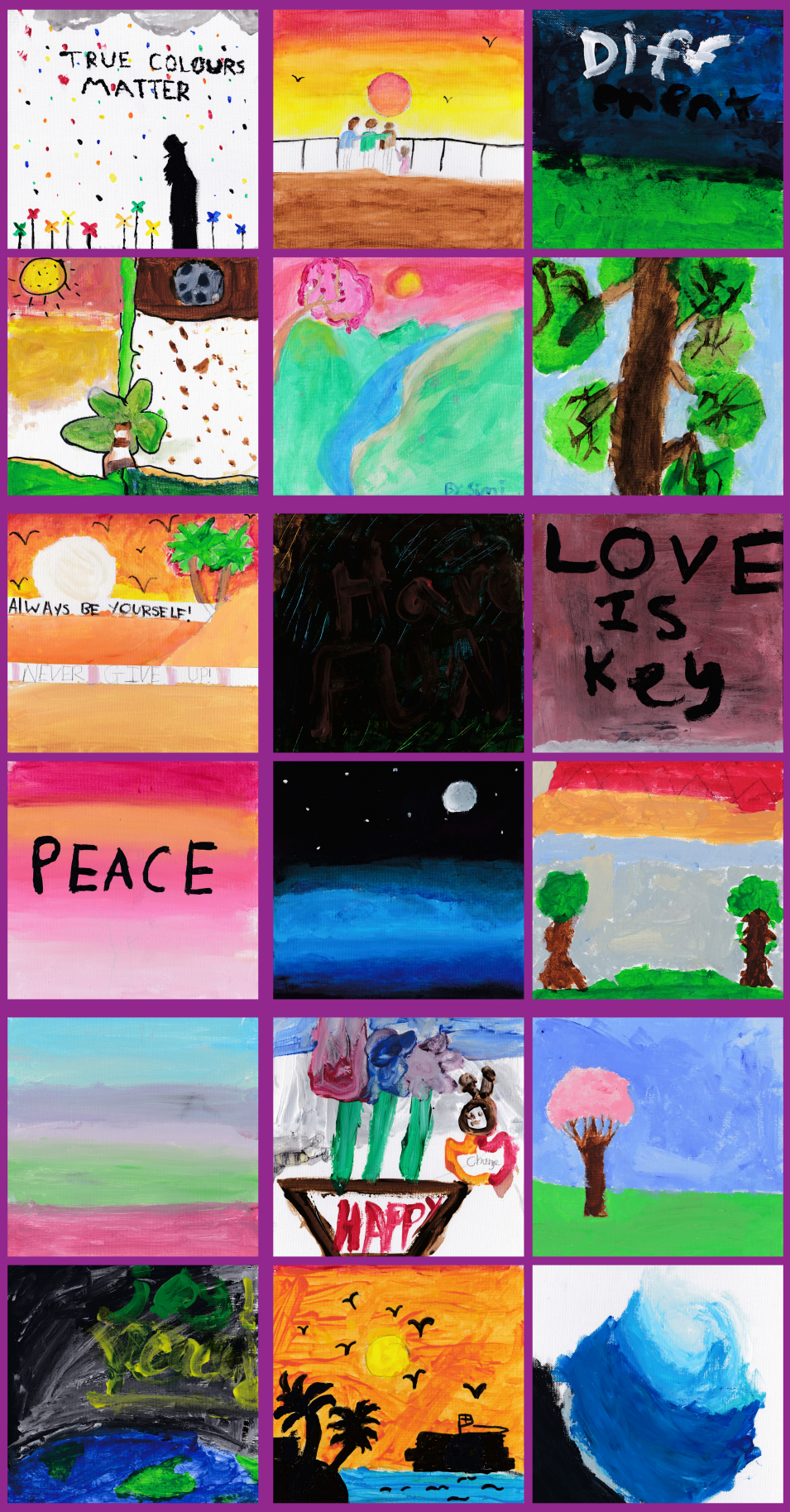




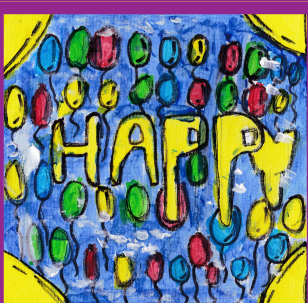
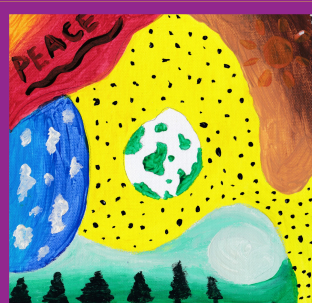
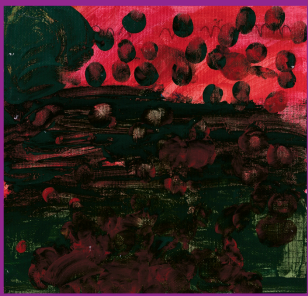


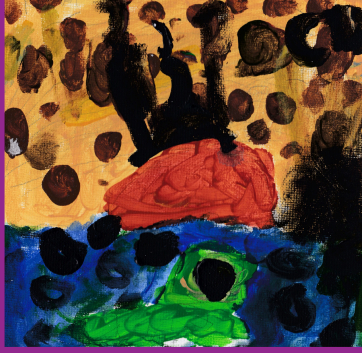
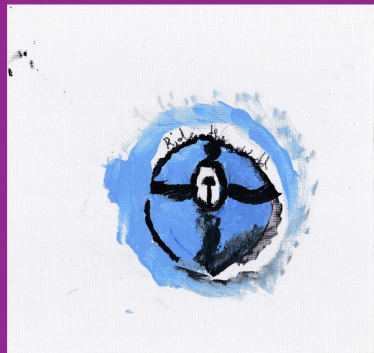












## About Roots to Change CIC

Roots to Change is a community interest company based in London. It builds on over 25 years of experience in the private and social sectors.

We exist to:

Empower communities to shape decisions that affect their lives  
Support children and young people to build confidence, self-esteem and healthy positive personal identities  
Facilitate community connection and collective action around shared goals

We do this through direct support to children and young people, community engagement, facilitation and research and by offering strategic advisory support to organisations.

## About Westminster Children's University

Westminster Children's University is an inspiring initiative designed to provide free educational opportunities for young people in London.

Our mission centres on dismantling financial and other barriers to ensure that cultural, educational, and developmental opportunities are accessible to all who want to participate. By doing so, we support young people and their communities in experiencing the broader world of work, culture, and creativity.

We aim to revitalise community spaces and enhance well-being support, enabling young people to connect with diverse professions, creative arts, and their wider community in meaningful ways.



# The Big Reshape

towards equality

Roots to Change would like to thank all the children from the five partner primary schools: Queen's Park, Essendine, Hallfield, St Peter's and St Mary of the Angels who participated in the project and of course the adults that helped make it happen!